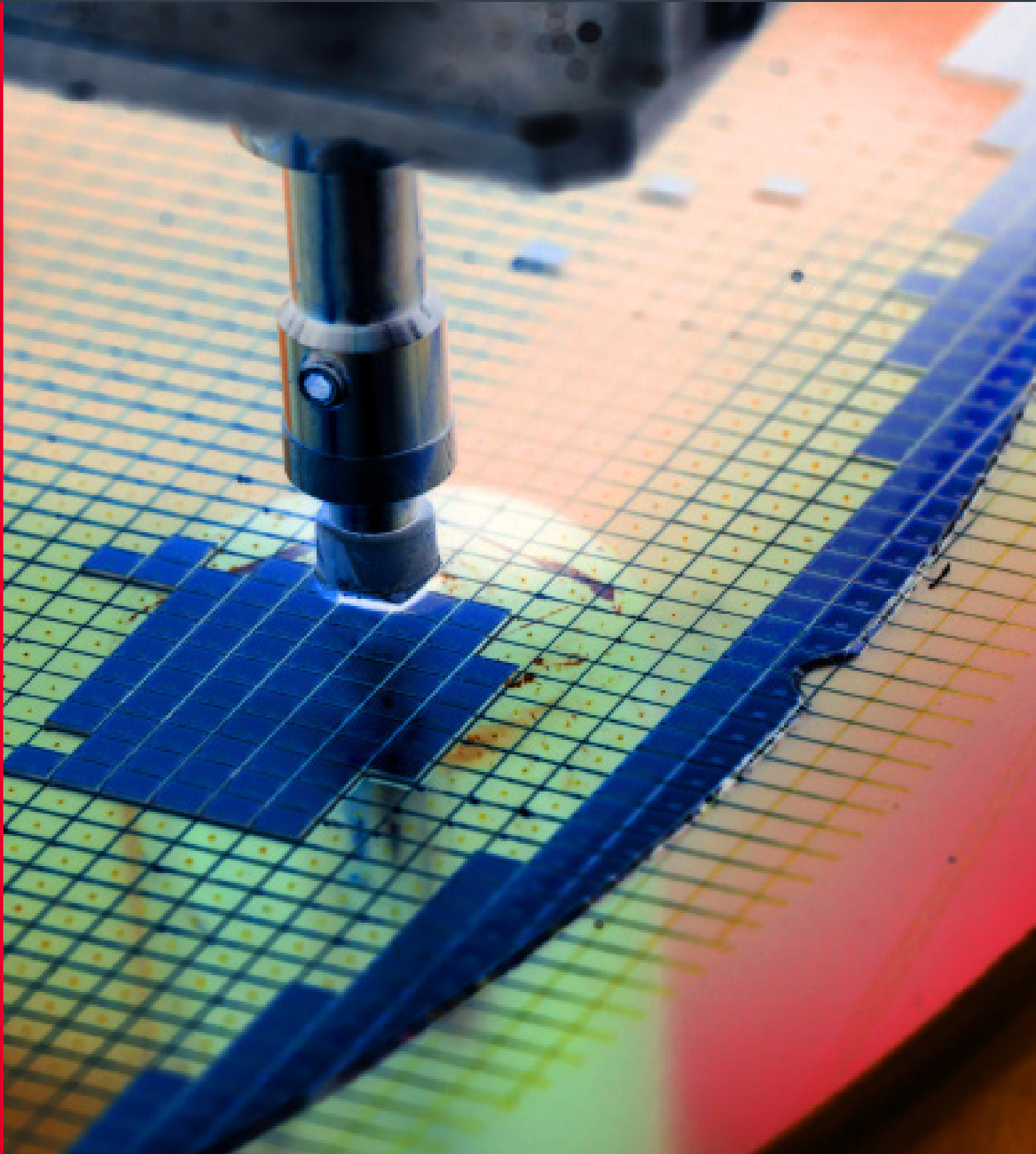


Semiconductor Equipment Case Study: ShockWatch RFID



Company Profile

Industry: Semiconductor

Application: Fabrication Equipment and Silicon Wafers

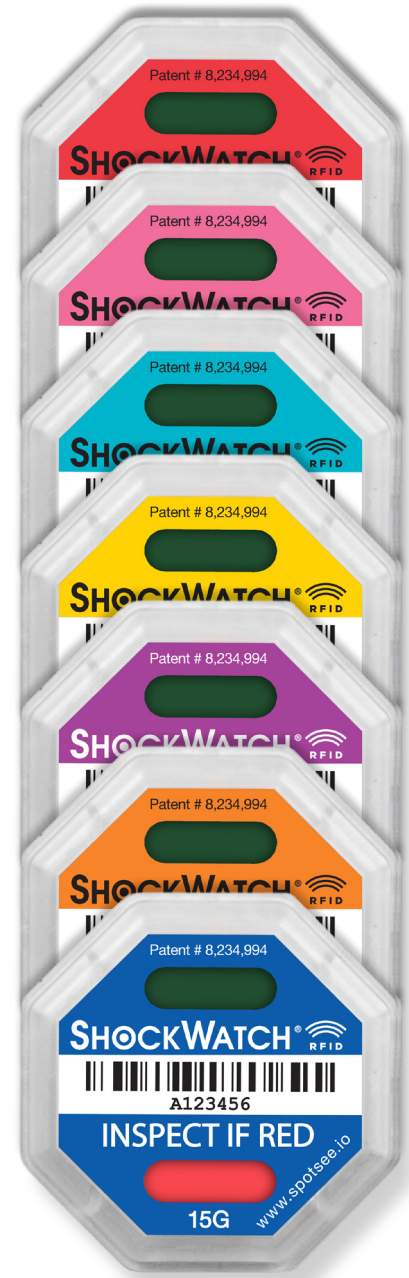
Challenge: Semiconductor fabrication equipment and the silicon wafers they produce are extremely sensitive to impact and tilt.

ShockWatch RFID Tags Protect Sensitive Semiconductor Equipment and Wafers from Damage in Transit

Semiconductor fabrication equipment and the silicon wafers they produce are extremely sensitive to impact and tilt. To protect them during transport, many of the world's largest manufacturers are beginning to use ShockWatch® RFID passive tags to monitor shipments and identify potentially damaging impacts.

RFID can make a noticeable improvement in terms of reducing damage rates for delicate wafers and the equipment that makes them. Given the current, global, shortage of semiconductor chips and growing global needs, taking extra steps to reduce damage is a logical precaution to protect your business.

It is a sound investment, too. SpotSee® partners report shipping damage was reduced an average of 50% when its highly visible impact monitoring tags were placed on their shipments. That's because cargo handlers are more careful when they know someone is tracking the condition of the assets.



The semiconductor industry is faced by a two-fold challenge. Impacts, like being hit by shifting cargo during delivery, can fracture wafers. Stronger impacts, like being bumped by a forklift or dropped while loading, can damage fabrication equipment's internal components.

When wafers break, they can be recycled. In fact, 85% of them are returned to their manufacturer and melted down to make new wafers. But that requires a reverse logistics program and exacts costs for the actual shipping and – especially during shortages – causes delays for chip manufacturers and their customers.

When fabrication machinery is damaged, it may not be obvious. Hidden damage can lead to hard-to-pinpoint problems later. Damage to scanners for photolithography or to etching equipment, for example, could cause circuits to be laid down in the wrong areas, making the chips worthless and ultimately triggering massive recalls. All the equipment in the fab – as the fabrication facility is called – is extremely precise. Costs for individual items are said to start at about \$700,000 with some items (notably EUV scanners) costing \$130 million.

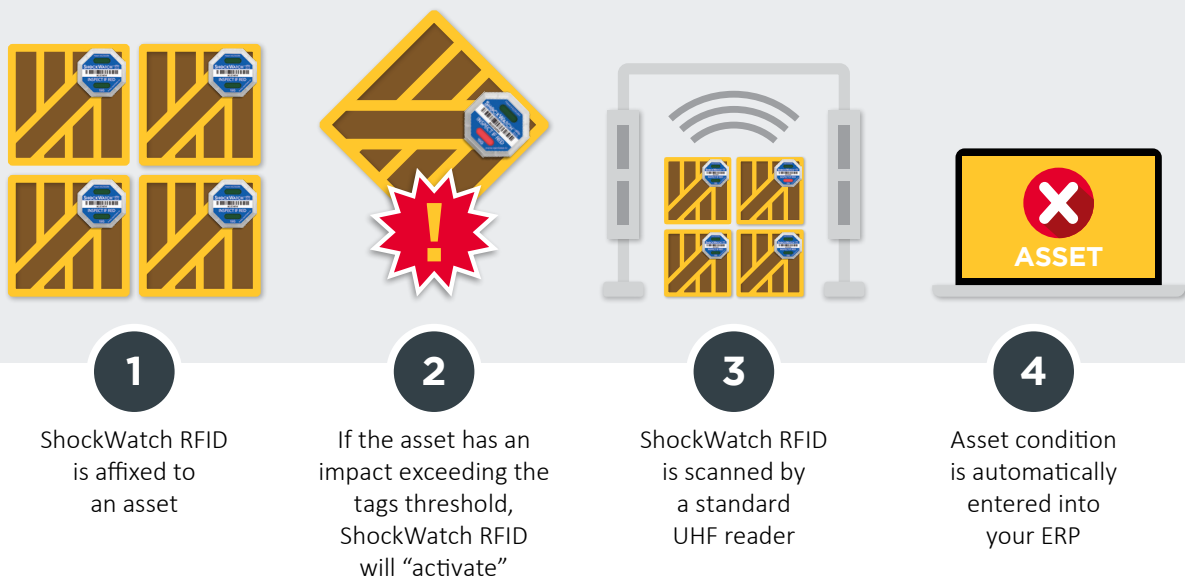
Protective packaging prevents most of the damage that occurs during shipping from affecting the products. But damage still occurs. Globally 2%-3% of shipments are damaged during transport. Implementing an RFID-based impact monitoring program can cut that damage significantly. Protecting semiconductor fabrication equipment and wafers with an RFID impact monitoring program, therefore, is a sound investment.





ShockWatch RFID tags turn red when they experienced unsafe impacts, so logistics professionals can spot items that should be inspected at a glance as well as receive an electronic indication. An easy way to do this is simply to affix ShockWatch RFID tags on the cartons being shipped, and then to install passive RFID readers at your facility's loading bay doors and other chokepoints.

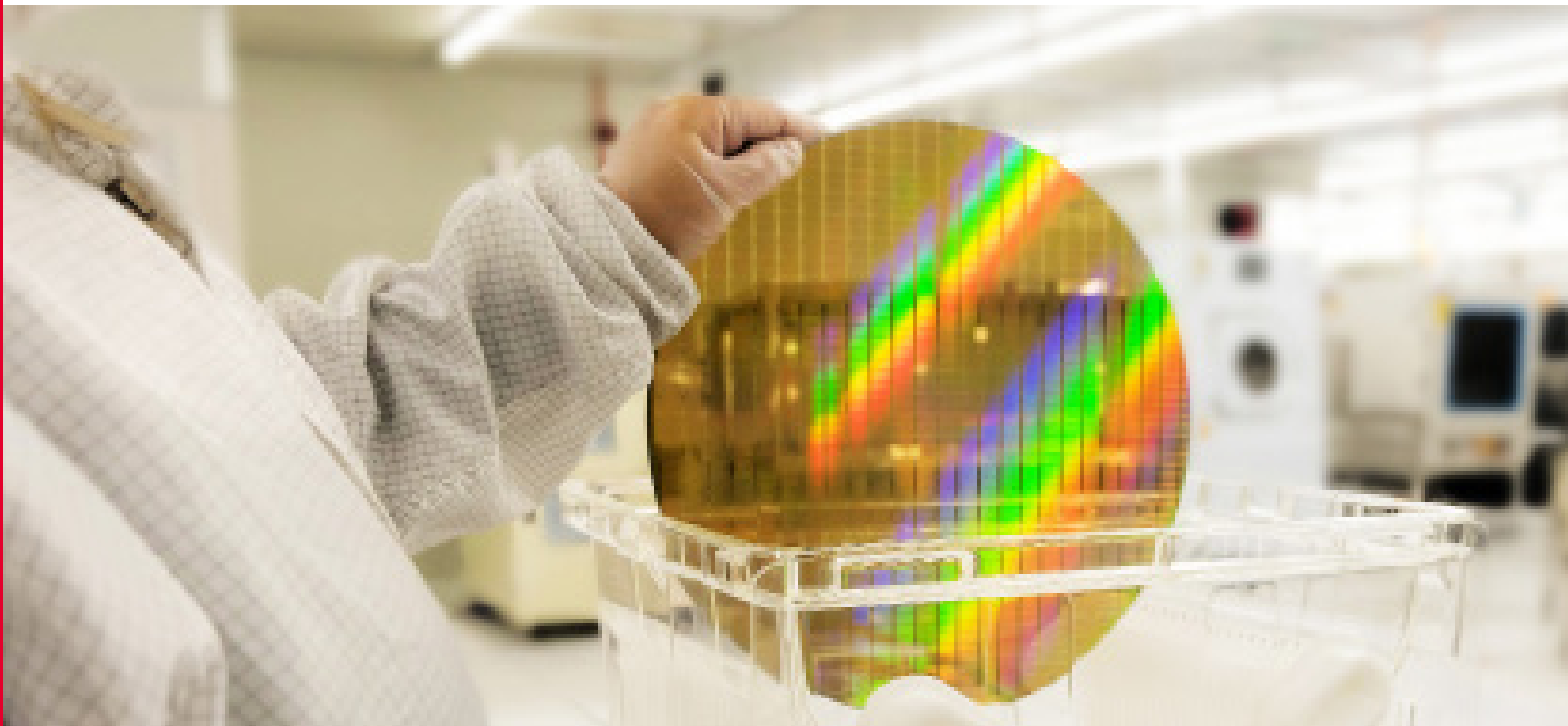
When RFID applications are linked to your inventory or equipment management system, condition reports are entered automatically when the equipment or wafers are received, and when they pass subsequent scanners as they move deeper into your facility. Importantly, today's RFID technology doesn't require line-of-sight to be read, and readers can read hundreds of tags in a few seconds.



SpotSee's combination of impact monitoring and RFID is a bonus for manufacturers. Not only can cargo handlers and warehouse workers see at a glance which semiconductors or fabrication equipment has experienced potentially damaging impacts exceeding prespecified thresholds (between 5Gs and 75Gs), but that information can be automatically entered to inventory management systems whenever the tags near a passive RFID reader.

Royal Philips Electronics became the first major semiconductor fabricator to deploy RFID tags throughout its semiconductor division in Asia in 2005. Since then, others have started adopting this technology to gain visibility into their supply chains and their own manufacturing environment. Now, RFID is making inroads throughout the supply chain, too, providing greater visibility into the condition of sensitive items throughout their transit.

Preventing damage and learning about damage to your equipment and materials early, before they are in the production line, are part of a comprehensive loss reduction plan that can help you avoid delays that could damage your reputation and drive customers to competitors. Using visible monitors, like SpotSee's ShockWatch RFID tags, goes a long way towards preventing shipping damage.

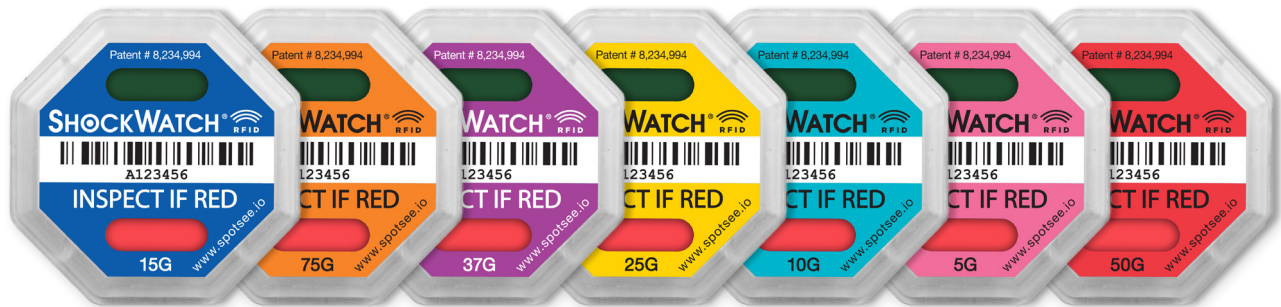


Extend the power of your RFID program by monitoring for damage

Every company wants to improve their supply chain processes. RFID technology aids companies in improving inventory control. The ShockWatch RFID impact indicator allows companies to leverage the inventory tracking benefits of RFID and the benefits of an impact monitoring program. With ShockWatch RFID impact indicators, the need for visual inspections during the receiving process is greatly reduced. When shipments are scanned, the receiver will know if there has been a potentially damaging impact. If the ShockWatch RFID has activated, inventory can be isolated for further inspection. If there has been no impact, the shipment can be moved into saleable inventory.

ShockWatch RFID impact indicators deliver all the benefits of an impact monitoring program – reduce damage from mishandling, refine supply chain processes so mishandling can be prevented, drive down costs – plus an electronic record of the information. Armed with data, it is possible to track down trouble spots in the supply chain and implement process changes to improve outcomes.

ShockWatch RFID impact indicators are single use devices that are tamperproof, field armable, turn red when an impact occurs and can be scanned with a standard UHF reader. Passive RFID technology is employed in the indicator so there is never a battery life issue to consider.



Benefits:

- Acts as a visual deterrent to mishandling
- Expands the utility of RFID with damage monitoring
- Reduces receiving times and isolates items that need inspection
- Reduces mishandling through awareness
- Helps identify trouble spots in the supply chain from production to transportation to storage

To learn more about how impact indicating RFID tags can help prevent damage to your silicon fabrication equipment and wafers, contact SpotSee.

www.spotsee.io/contact